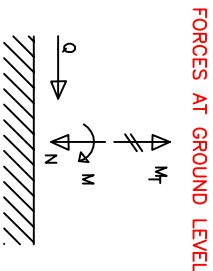
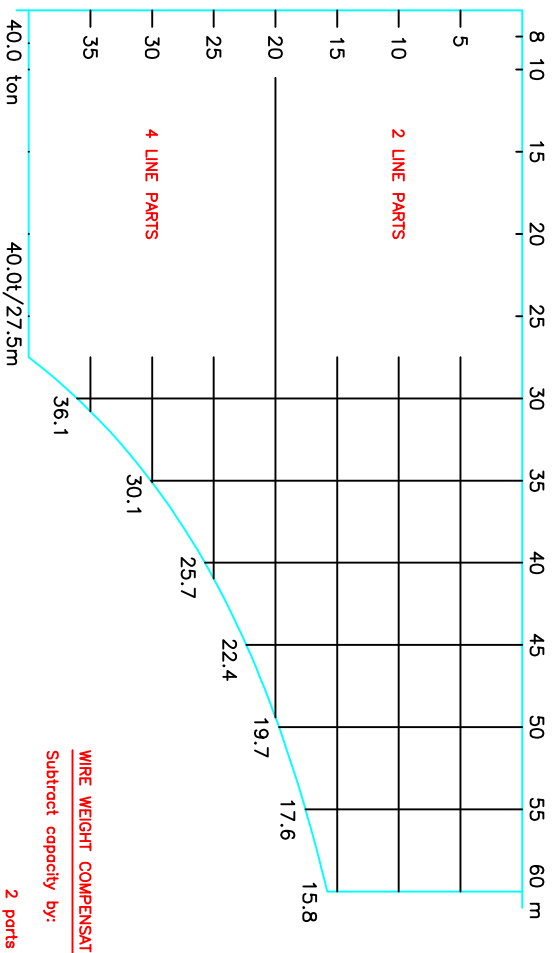
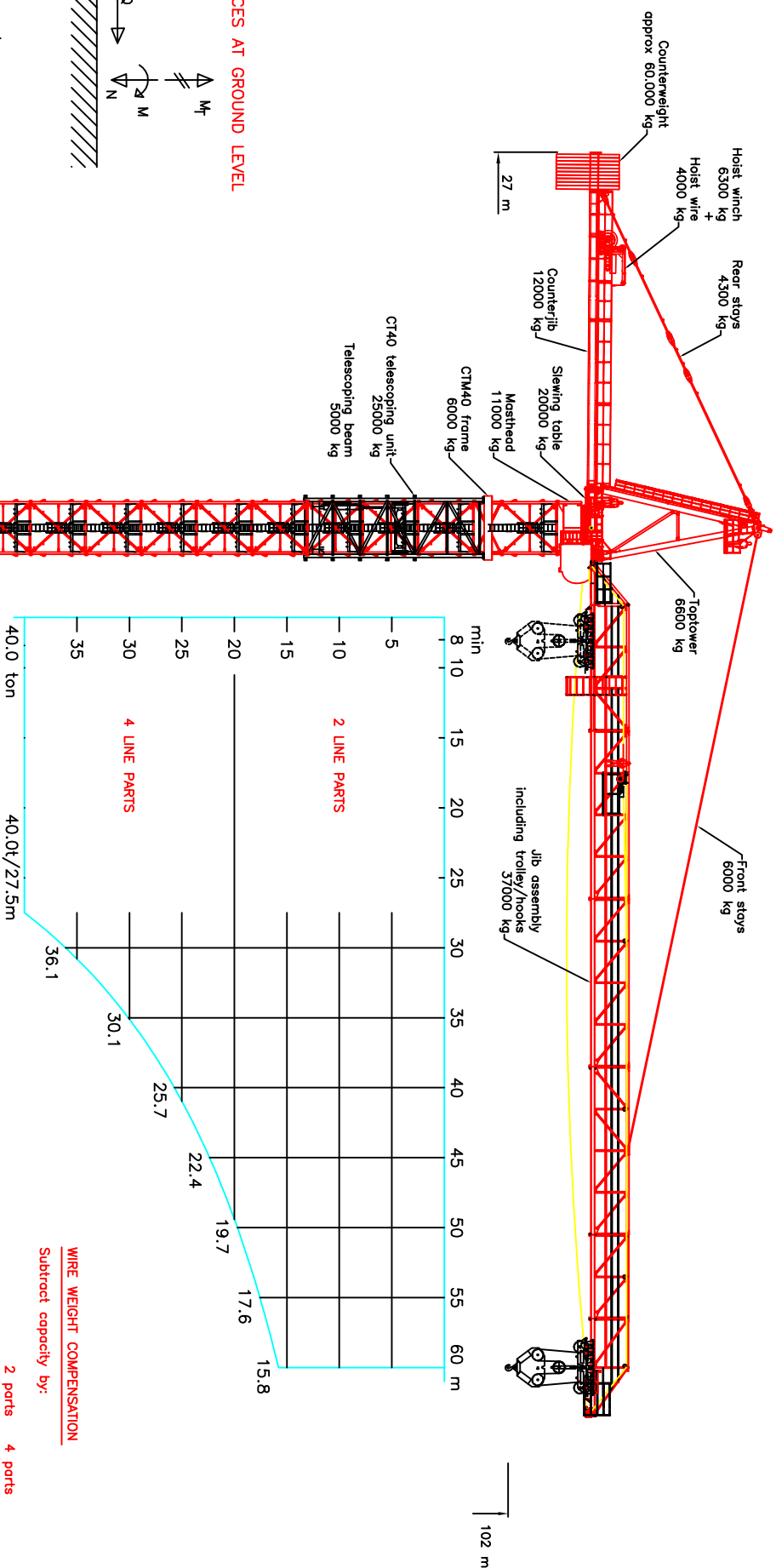


THIS DRAWING IS THE PROPERTY OF KRÖLL CRANES A/S AND MAY NOT BE REPRODUCED OR TRANSMITTED IN ANY FORM OR BY ANY MEANS, ELECTRONIC OR MECHANICAL, WITHOUT PERMISSION.

K1000



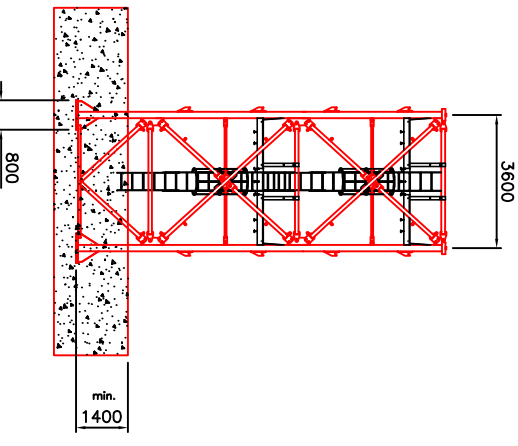
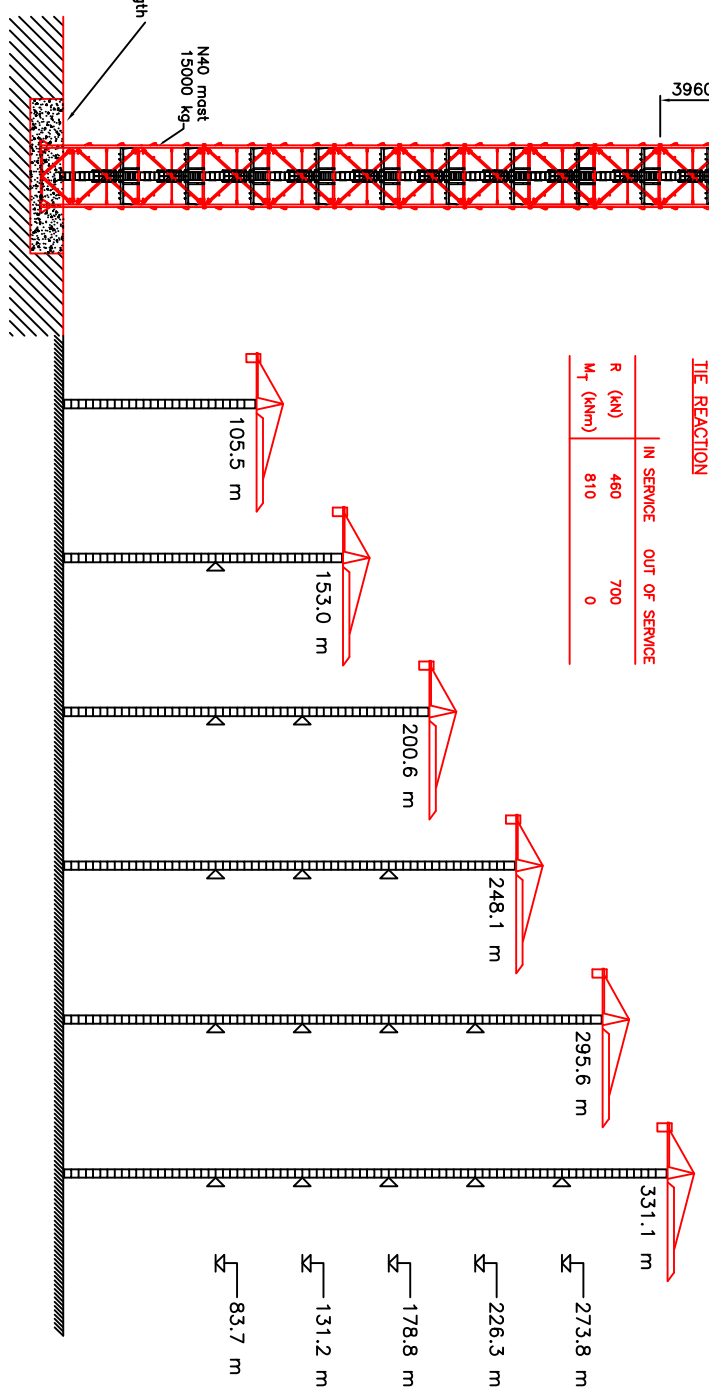
Wind speed	IN SERVICE	OUT OF SERVICE
	20 m/s	55 m/s
M (kNm)	17520	27400
N (kN)	2970	2760
Q (kN)	110	470
M _T (kNm)	810	0
Corner compression (kN)	4180	6060
Corner tension (kN)	2700	4680



WIRE WEIGHT COMPENSATION
 Subtract capacity by:
 2 parts 4 parts
 100 m HUH : 0.3 t 0.6 t
 200 m HUH : 1.0 t 2.0 t
 325 m HUH : 1.8 t 3.6 t

THE REACTION

	IN SERVICE	OUT OF SERVICE
R (kN)	480	700
M _T (kNm)	810	0



Suggested foundation size:
 12.5 x 12.5 x 1.8 m
 based on 200 kN/m² ground strength

PERFORMANCE

HOIST MOTOR : 200 kW	
2 PARTS	
0-5 t	0-150 m/min
5-9 t	0-100 m/min
9-20 t	0-52 m/min
4 PARTS	
0-10 t	0-75 m/min
10-18 t	0-50 m/min
18-40 t	0-26 m/min
	0-70 m/min
	0-0.6 rpm

3 x 380-480 V
 50-60 Hz
 CONTROL VOLTAGE
 24 VDC - 220 VAC

KONST.: 091020 JL	PROJ.	KRANTYRE	STK.	SMÅL. TEKN.
TEKN.: 091020 JL				
COOR.: 091020 JL				
ERSTATTER:	SKALDE:	OVERF. AREAL:	OVERFLADE-BEHANDLING:	MÅTTE:
ERSTATTET AF:	TOTALVEGT:	ANT. TEKNISKE:	ANT. STYKKE:	
OPRINDELSE:	TRANSPORTVÆGT:			
KRÖLL CRANES A/S		Rusky Island Bridge Project		
NORBRANVEJ 2, 3540 LYNGE, DENMARK		Pylon 7		
PHONE: +45 46 187400 FAX: +45 46 188007		TECH. NR. C1-00.00090578-05		