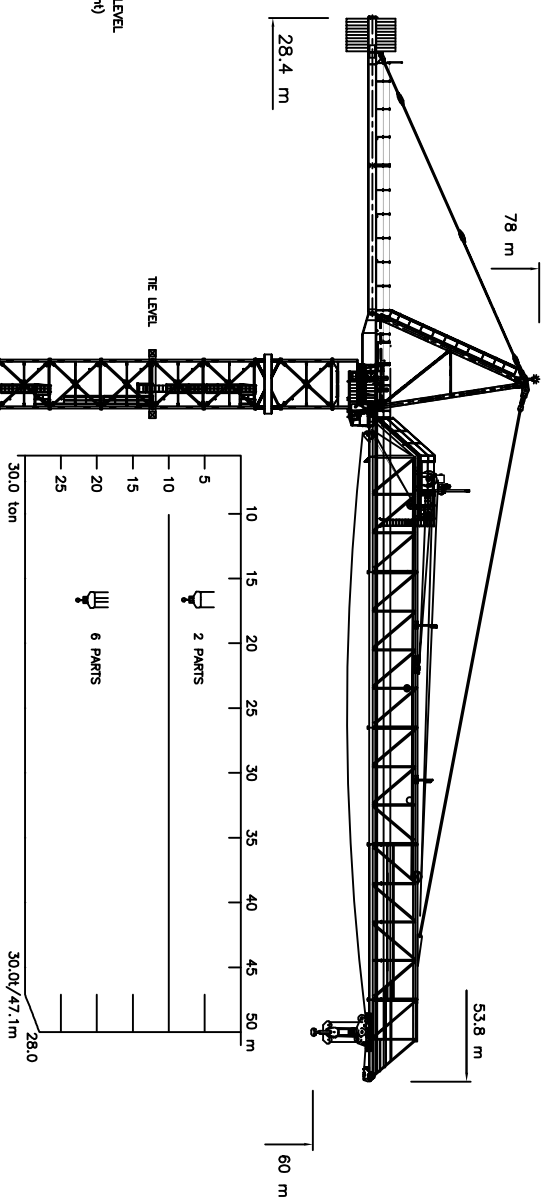
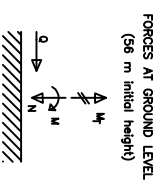


THIS DRAWING IS THE PROPERTY OF  
 BE REPRODUCED IN WHOLE OR PART  
 WITHOUT PERMISSION.

1 2 3 4 5 6 7 8 9

# K1400

Option 1 - TC5  
 Cotai Parcel 7&8



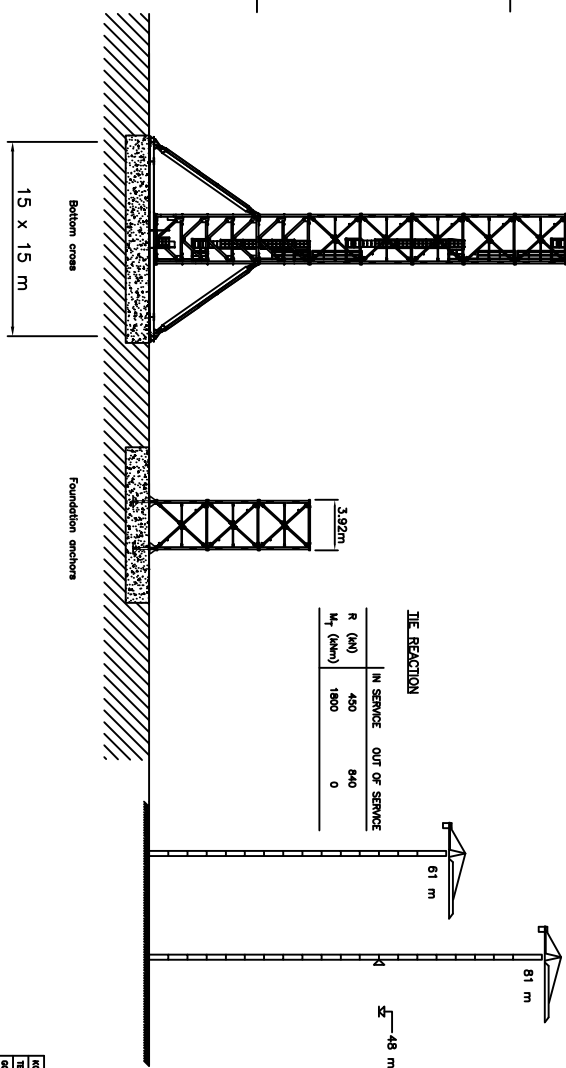
	Wind speed	
	IN SERVICE 20 m/s	OUT OF SERVICE 80 m/s
Moment, M (kNm)	13940	23300
Vertical, N (kN)	3330	2830
Horizontal, Q (kN)	85	770
Torque, M <sub>T</sub> (kNm)	1800	0

Erected on bottom cross	
Corner comp. (kN)	1480
Corner tension (kN)	-200

Erected on foundation anchors	
Corner comp. (kN)	3480
Corner tension (kN)	2000



THE REACTION

	IN SERVICE	OUT OF SERVICE
R (kN)	400	840
M <sub>T</sub> (kNm)	1800	0

PERFORMANCE

HOST MOTOR :	150 kW	
2 PARTS	0-4 t 4-7 t 7-10 t	0-150 m/min 0-100 m/min 0-75 m/min
6 PARTS	0-12 t 12-21 t 21-30 t	0-50 m/min 0-33 m/min 0-25 m/min
	0-30 t	0-70 m/min
	0-30 t	0-0.5 rpm

3 x 380-480 V 50-60 Hz	CONTROL VOLTAGE 24 VDC - 220 VAC
---------------------------	-------------------------------------

DESIGNER: KOMET, GOMPA & PARTNERS	SCALE: 1:200	DATE: 11/2007
PROJECT: KROLL CRANES A/S	CLIENT: KROLL CRANES A/S	PROJECT NO: K1400-50
PROJECT NO: K1400-50	PROJECT NAME: KROLL CRANES A/S	PROJECT ADDRESS: KROLL CRANES A/S, KROLL CRANES A/S, KROLL CRANES A/S

Page 5  
 C1-00.00090489-01