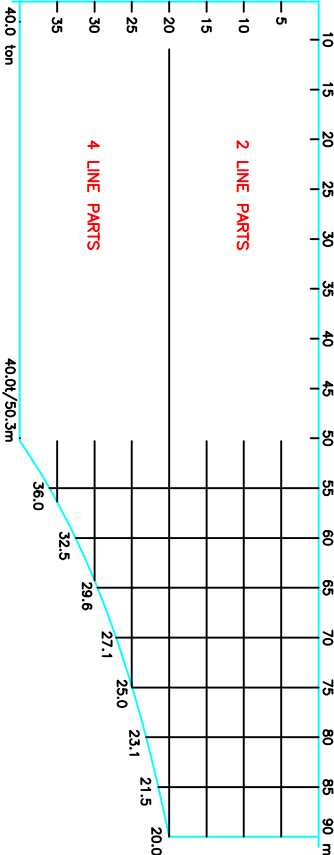
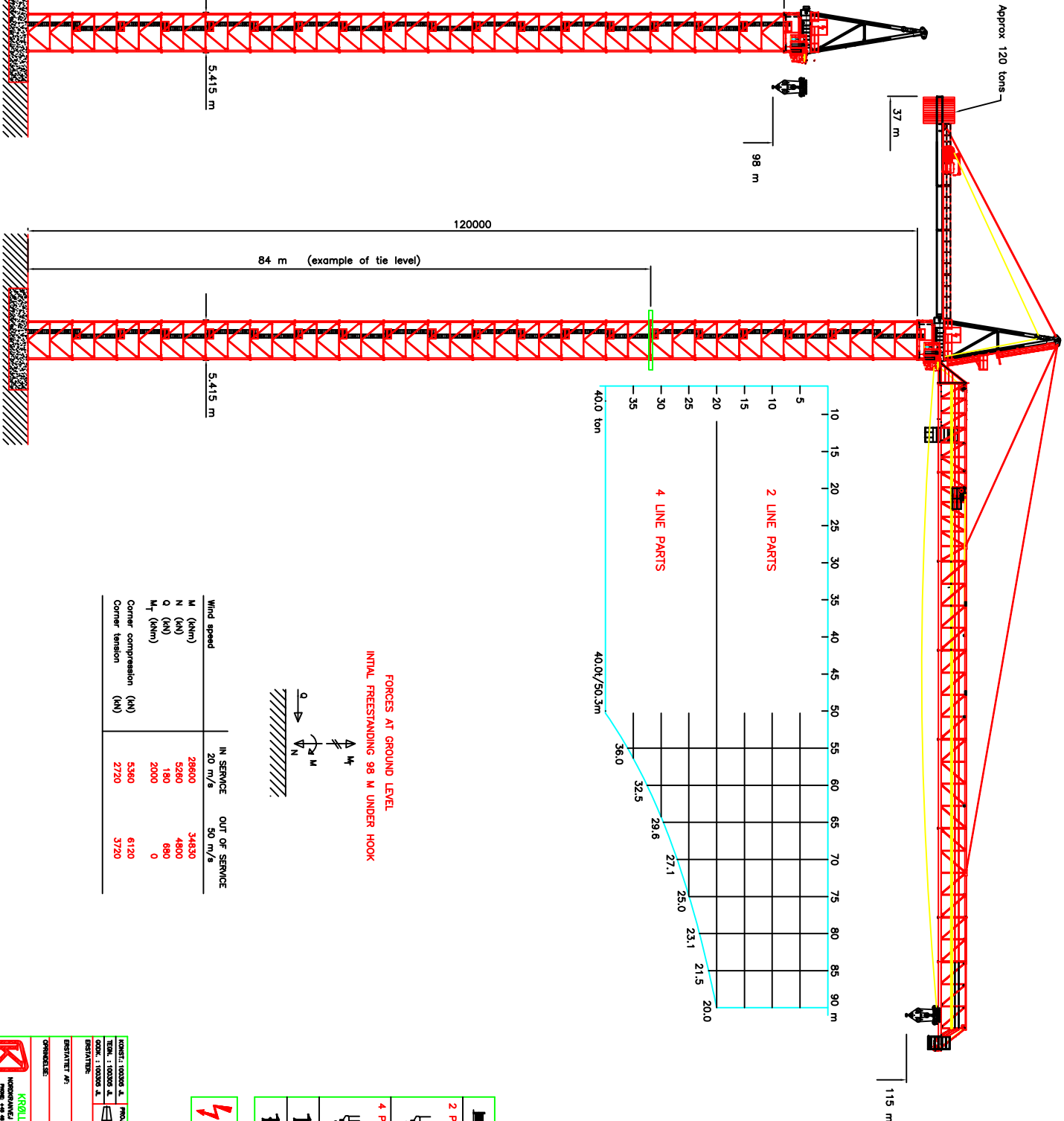
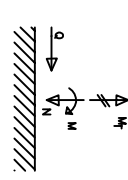


THIS DRAWING IS THE PROPERTY OF KRÖLL CRANES A/S. IT IS TO BE RETURNED TO US IMMEDIATELY UPON COMPLETION OF THE WORK. NO PARTS OF THIS DRAWING ARE TO BE REPRODUCED OR TRANSMITTED IN ANY FORM OR BY ANY MEANS, WITHOUT PERMISSION.

# K2500



FORCES AT GROUND LEVEL  
INITIAL FREESTANDING 98 M UNDER HOOK



Wind speed	IN SERVICE 20 m/s	OUT OF SERVICE 50 m/s
M (kNm)	29600	34630
N (kN)	5260	4900
Q (kN)	180	880
M <sub>T</sub> (kNm)	2000	0
Corner compression (kN)	5360	6120
Corner tension (kN)	2720	3720

## PERFORMANCE

HOIST MOTOR :	156 kW
<b>2 PARTS</b>	
0-5 t	0-120 m/min
5-9 t	0-80 m/min
9-20 t	0-40 m/min
<b>4 PARTS</b>	
0-10 t	0-80 m/min
10-18 t	0-40 m/min
18-40 t	0-20 m/min
<b>T</b>	0-40 t
<b>T</b>	0-70 m/min
<b>T</b>	0-0.4 rpm

3 x 400-400 V, 50-60 Hz  
230/250 VAC (nominal/peak)  
CONTROL VOLTAGE  
24 VDC - 230 VAC

**KRÖLL CRANES A/S**  
K2500-90  
C1-00.00090647-01

DESIGNER:	TECHNICAL:	DATE:
CHECKED:	APPROVED:	